

INDEX

ENCAPSULATION EQUIPMENT, LLC

Mr. Michael Lee
Hansco, Inc.
Orange, CA

March 13, 2019
Quote# 0319-007-A

Index K120i Capsule Filler

General Description

The Index K120i is a fully automatic, intermittent motion, high speed encapsulator designed to separate, fill, close, and eject two-piece capsules at a maximum output of 120,000 capsules per hour. The Index K120i comes complete with a 1 year warranty, internal vacuum pump for capsule separation, an operator touch screen and one complete set of tooling with 3 dosing discs.

Efficient

- Tamping Pin and Dosing Disc provide highly accurate and consistent weights
- Internal Vacuum Pump dedicated to capsule separation
- Dust Collection Ports and Manifolds extend life of wear parts
- Dust Collection Cyclone extends life of vacuum filters

Reliable

- Segment Turret and Dosing Disc Geneva Drives
 - *Superior Torque over Direct Drives
- Nitride Hardened Cams

Safe

- Non-Contact Interlocks
- 2 E-Stops

Easy-To-Use

- Allen-Bradley Controls
- Easily adjust Speed, Air and Vacuum Settings
- Quickly diagnose specific Alarms

Elite Support

- Same-day quotes and order shipments
- Excellent phone support
- Flexible service schedule
- Made in America



Index Encapsulation Equipment, LLC
364 Valley Rd., Unit 100, Warrington, PA
Phone 267-387-3000 Fax 267-387-3001



Design Description

Design Criteria

All Index machines are manufactured according to cGMP guidelines in the USA.

Materials Utilized

- Product Contact Parts are constructed of Stainless Steel, 660 Bronze, Anodized Aluminum or FDA Approved Coatings and Plastics.
- Above the Main Table, Non-Product Contact Parts are constructed of Stainless Steel, Anodized Aluminum, 660 Bronze, or FDA Approved Coatings and Plastics.
- The Main Table is constructed of Stainless Steel.
- All Cams are constructed of 4140 Steel, Heat Treated and Nitride Hardened.

Technical Specification

- **Weight & Dimensions**

Net weight:	2,025 kg / 4,500 lbs
Gross weight:	2,250 kg / 5,000 lbs
Machine dimensions: (Lx WxH)	1,207mm x 1,295mm x 2,311mm / 47.5" x 51" x 91"

- **Output & Speed**

Mechanical output:	120,000 Capsules per Hour
Actual output:	Based on Setup, Product Properties, and Capsule Properties

- **Utilities Required**

Electrical:	460V / 60Hz / 3 Phase + ground
Compressed air:	5 bar, 140 liters/min 80 psi, 5 cfm
Vacuum:	125CFM @ 4.5" (Dust Collection) 25CFM @ 15" (Capsule Separation)

- **Material Specifications**

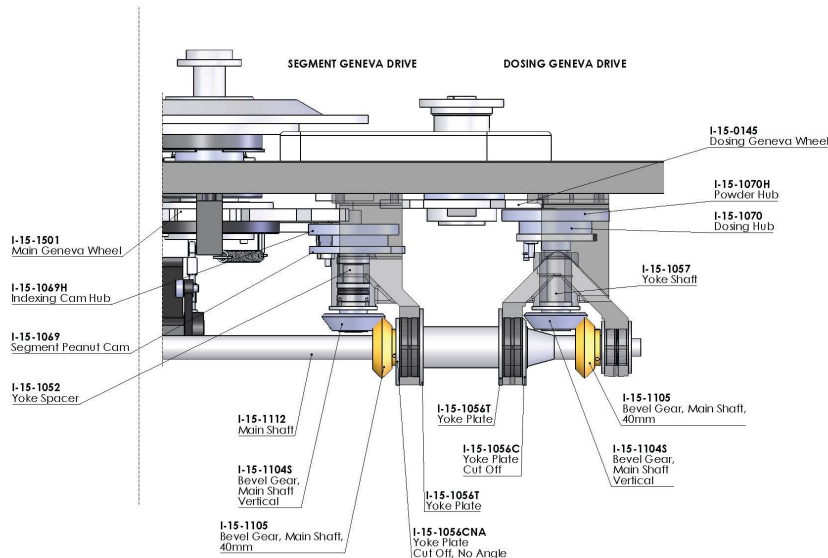
Capsule size range:	00 to 4
Capsule types:	Standard 2 Piece Gelatin or HPMC Capsules
Product types:	Powder

INDEX

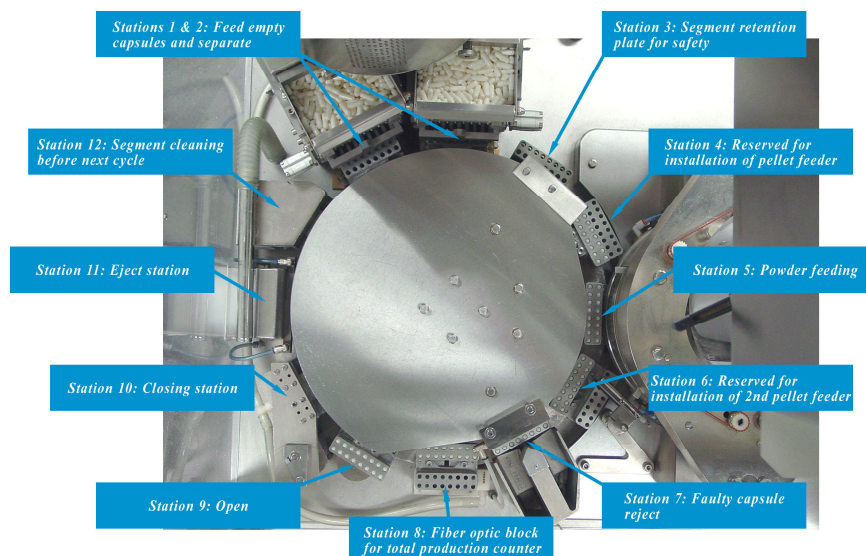
ENCAPSULATION EQUIPMENT, LLC

Mechanical Description

- Main Motor drives the Main Shaft which turns the Main Shaft Cams and Geneva Drive Gears.
- The Segment and Dosing Geneva Drives index the Lower Segment Turret and Dosing Disc.
- The Main Shaft Cams raise and lower the Shafts and Pins for each operation station.



- The Magazines, Orientation Blocks and Horizontal Fingers sort, orientate and load the capsules into Segments.
- The internal Vacuum Pump and Suction Shoes separate the empty capsules within the Upper and Lower Segments.
- The Segments transport the empty capsules to the Dosing, Faulty, Closing and Ejection Stations.
- The Low Powder Sensor, Powder Motor and Auger automatically feed powder into the Powder Bowl.
- Tamping Pins and the Dosing Disc form a powder slug which is transferred into the capsule body.
- Air pressure assists with capsule loading, faulty rejection, ejection, and cleaning.
- Dust Collection Manifolds and Cyclone assist with removing excess powder and extending the life of wear parts.

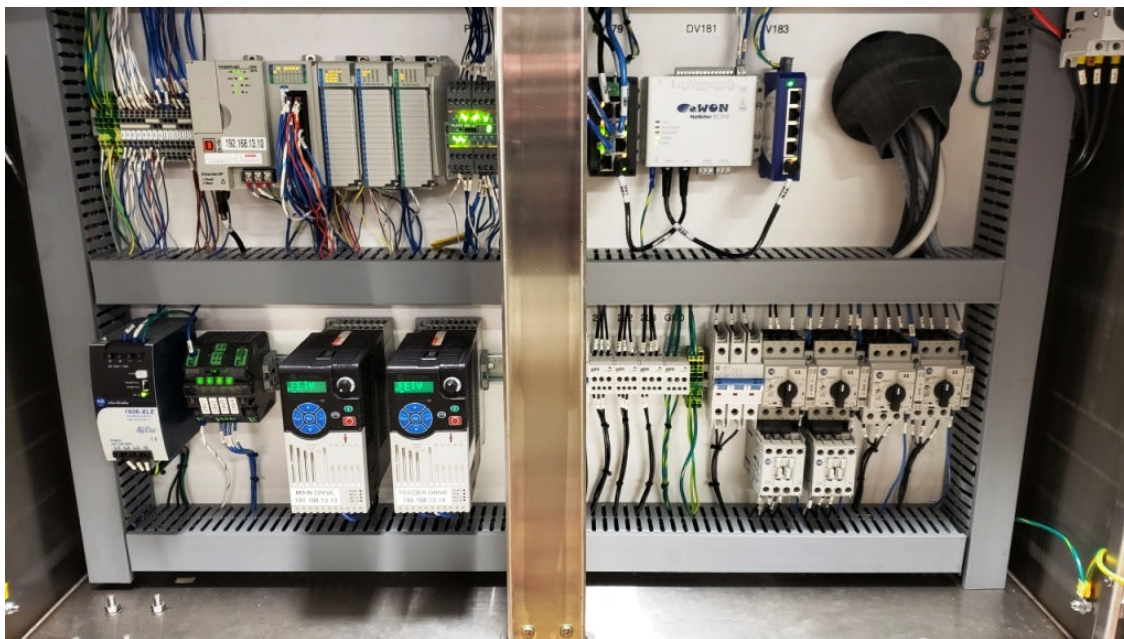
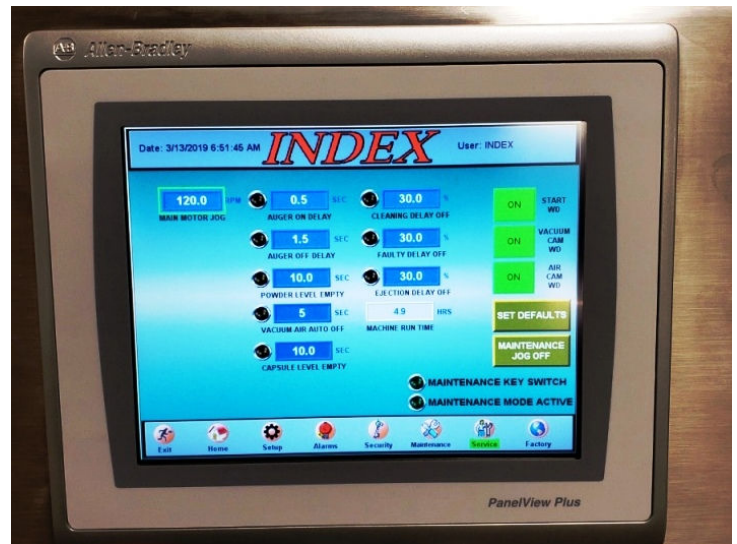


INDEX

ENCAPSULATION EQUIPMENT, LLC

Electrical Description

- Simple and Easy-to-Use Operations
- Remote Access and Monitoring
- Data Storage
- Allen Bradley 10.4" Touch-Screen HMI
- Allen Bradley PowerFlex Frequency Drives
- Allen Bradley Compact Logix PLC
- RS5000 Software



Index Encapsulation Equipment, LLC
364 Valley Rd., Unit 100, Warrington, PA
Phone 267-387-3000 Fax 267-387-3001

INDEX

ENCAPSULATION EQUIPMENT, LLC

OPTIONS:

HMF & Nedox Coated Tooling

- Increases Efficiency
 - Prevents Sticking
 - Prevents Closing Issues
 - Prevents Separation Issues
 - Improves Weight Consistency
- Extends Life of Tooling
- FDA Compliant



I-200-ECE CAPSULE POLISHER

- Variable Speed
- Adjustable Machine Angle
- Easy Disassembly/Assembly
- Small Footprint
- Up to 300,000 Capsules Per Hour
- Eliminate Empty Capsules
- Made in the U.S.A.



DUST COLLECTION

- Nilfisk Dust Collection Pump (Optional)
- Stainless Steel Dust Collection Cyclone (1 Included)
- Dosing Station Manifold (Included)



Nilfisk Vacuum Pump w/SS Cyclones



Dosing Station Manifold

INDEX

ENCAPSULATION EQUIPMENT, LLC

Index K120i Capsule Filler Includes: (1) <i>Set of Nedox Coated Tooling; Capsule Size 00</i> (3) <i>Nedox Coated Dosing Discs; Size and Thickness TBD</i> (1) Tool Kit; Includes Custom Setup and Alignment Tools (1) Stainless Steel Dust Collection Cyclone (1) Operation Manual with Electrical Diagrams and Spare Parts Book 1 Year Warranty	\$247,500.00
Index I-200-ECE Capsule Polisher; standard price is \$10,000 The I-200-ECE Polisher uses a variable speed motor and removable nylon brush to clean and polish capsules. The Empty Capsule Eliminator removes empty, broken, or under-weight capsules prior to ejecting from the polisher.	\$7,500.00
Spare Part Kit; standard price is \$10,000 Recommended Spare Parts; segment carriers, selection arms, suction shoes, etc.	\$7,500.00
Additional Set of Size 0 Nedox Coated Tooling; standard price is \$20,000/ea Any Size Tooling (00-4) Nedox Coated Segments and Tamping Pins Does not include Dosing Disc	\$17,500.00/ea.
Additional Size 0 Nedox Coated Dosing Disc; standard price is \$3,500/ea Any Size (00-4); Any Thickness (8.0mm – 25.0mm) Includes Scraper and Storage Case.	\$2,500.00/ea.
Nilfisk Dust Collection Vacuum Pump standard price is \$10,000/ea Dedicated to Dust Collection.	\$7,500.00
Additional Stainless Steel Dust Collection Cyclone standard price is \$7,500/ea Collect 99% of excess powder. Protects vacuum system and filters. Easy to Clean and assemble. Keeps machine running clean and extends life of wear parts.	\$5,000.00
Start-up Service and Training Labor; standard price is \$5,000/day 3 Days of On-Site Training and Start-up Service. Training covers Safety, Setup, Operation, Maintenance and Trouble-shooting. *Includes Travel and Living Expenses.	\$2,500.00
Factory Acceptance Test / In-House Training 3 Days of Testing and Training to be performed at Index prior to machine shipping to customer.	Included
TOTAL PRICE w/OPTIONS	\$297,500.00
TOTAL DISCOUNTED PRICE	\$287,500.00



Terms and Conditions

Payment Terms:

- 50% Down Payment with Purchase Order.
- 40% Prior to Delivery.
- Balance Plus Shipping Due Net 30 Days After Shipment.

EXW (Ex Works) Shipping Terms:

- Seller is responsible for making the goods available at the seller's premises.
- Index to provide crate.
- Customer is responsible for shipping cost.
- The equipment should be shipped in a dedicated, air-ride, closed-van truck.

Machine Warranty Summary:

- Index Encapsulation Equipment, LLC warrants the Index Capsule Filler against manufacturer's defects.
- Warranty is good for a period of 1 year from date of acceptance, or 3,000 operation hours, whichever comes first.
- The warranty does not cover damage incurred at customer's facility due to improper use or handling.
- The warranty does not cover Wear Parts, Service Visits, or Shipping Costs.

Estimated Delivery:

- 12-16 Weeks after Receipt of the Down Payment.
- Subject to options purchased and production schedule at time of purchase.
- An updated ETA will be provided after the down payment is received.

This Quotation is Valid for 30 Days